



# SERIES DX72



## Jumper Kit

### Specifications

**Material:**

Screw: Steel, zinc plated with yellow chromate

Tube: Brass, tin plated

Crossover plate: Brass, tin plated

### Ordering Information

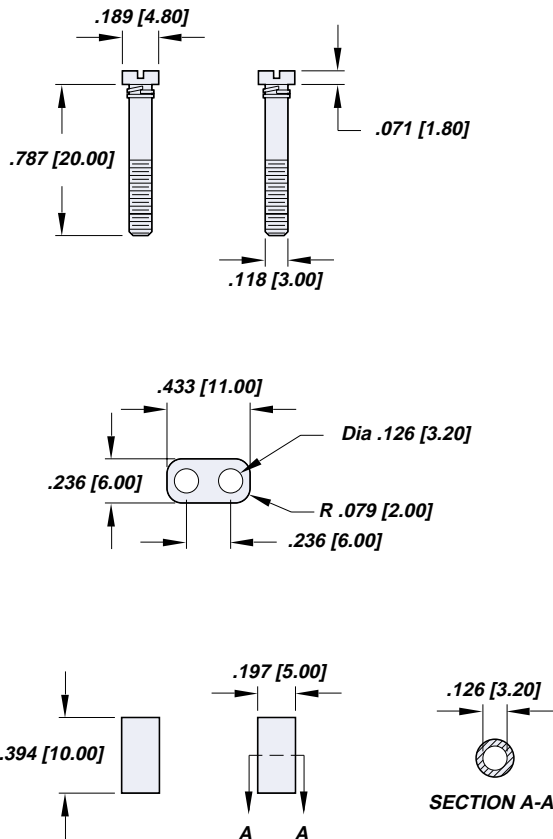
**DX72-A**  
1

1. **Configuration:**

A = Jumper kit for Series DR04

B = Jumper kit for Series DR06

#### Configuration A



#### Configuration B

