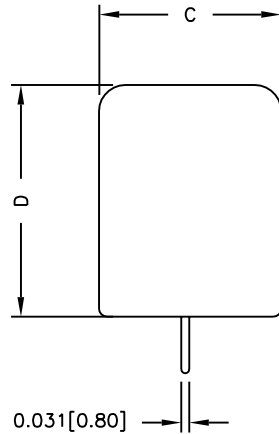
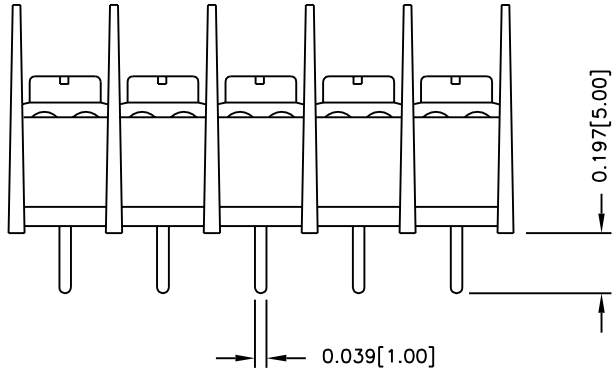
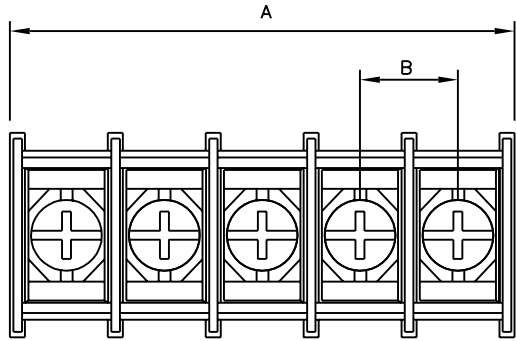


REVISIONS LIST				
REV	ECO #	DESCRIPTION	DATE	APV'D



ORDERING INFORMATION

Center pin vertical PCB ———— TB01-1 X X X X

Pitch: ————

A=7.62mm
B=8.25mm
C=9.50mm
D=10.00mm
E=11.00mm

Plating:
T = Tin*
F = Gold flash

Mounting options:
N=Without mounting ears*
H=with mounting ears

* Standard

Positions: ————

Pitch	W/O	With Ears
A	02-33	02-30
B	02-32	02-28
C	02-30	02-26
D	02-30	02-26
E	02-26	02-22

Specifications


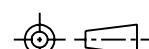
Material:
Insulator: Polyamide 6.6, black, rated UL 94V-0
Contact: Brass, Tin plated
Screws: Steel, nickel plated
Plating:
200µ" tin-lead over 100µ" copper underplated. or
optional gold flash over 100µ" nickel underplated

Electrical:
Operation voltage: 300V AC max
Current rating: Pitch A=10 Amps max
Pitch B=15 Amps max
Pitch C, D=20 Amps max
Pitch E=25 Amps max

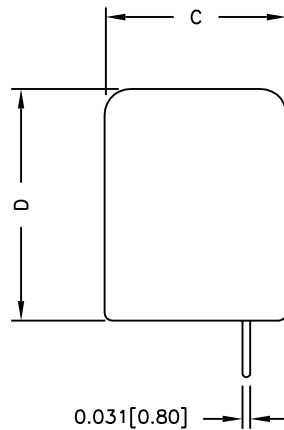
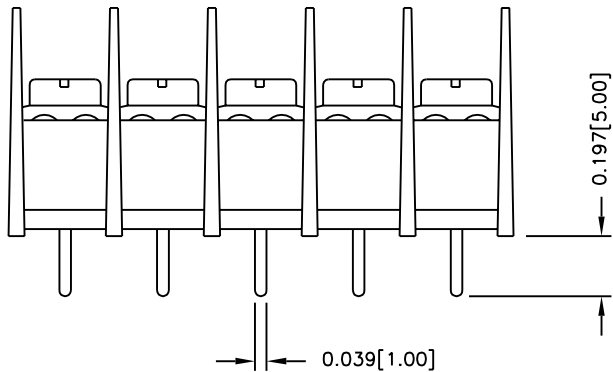
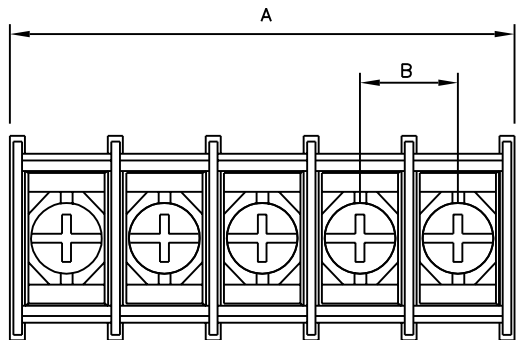
Insulation resistance: 1000 MΩmin @ 500V DC
between adjacent contacts (75°F and 50% R.H.)
Dielectric withstanding voltage: 2000V AC min rms
(sea level)

Mechanical:
Wire Range: 22-16 AWG
Operating temperature: -40°C to +105°C

Dim A	Dim B	Dim C	Dim D
0.300[7.62] x No. of Pos. + 0.079[2.00]	7.62mm	0.539[13.70]	0.598[15.20]
0.325[8.25] x No. of Pos. + 0.079[2.00]	8.25mm	0.539[13.70]	0.598[15.20]
0.374[9.50] x No. of Pos. + 0.079[2.00]	9.50mm	0.650[16.50]	0.728[18.50]
0.394[10.00] x No. of Pos. + 0.079[2.00]	10.00mm	0.610[15.50]	0.728[18.50]
0.433[11.00] x No. of Pos. + 0.079[2.00]	11.00mm	0.677[17.20]	0.748[19.00]

UNLESS NOTED TOLERANCES ARE: .XX ± .01 .XXX ± .005 ANGLES ± 1°	THIRD ANGLE PROJECTION	 1170 S. PATTON ST. XENIA, OHIO 45385 PH: (937) 374-2700 FX: (937) 374-4774
		
UNIT : INCH[MM]	DRWN : XLZ	TITLE Single Wall Barrier Terminal Block
SCALE : NTS	DATE : 06/18/01	
SHEET : 1 OF 1	APV'D :	
THESE DRAWINGS AND SPECIFICATIONS ARE THE PROPERTY OF SPI AND SHALL NOT BE COPIED, USED OR RE-PRODUCED WITHOUT PERMISSION.		SPI P / N : TB01-1 SERIES REV : A FILE NUMBER :

REVISIONS LIST				
REV	ECO #	DESCRIPTION	DATE	APV'D



ORDERING INFORMATION

TB01-2 X X X X

Side pin vertical PCB

Pitch:
A=7.62mm
B=8.25mm
C=9.50mm
D=10.00mm

Plating:
T = Tin*
F = Gold flash

Mounting options:
N=Without mounting ears*
H=with mounting ears

* Standard

Positions:

Pitch	W/O	With Ears
A	02-33	02-30
B	02-32	02-28
C	02-30	02-26
D	02-30	02-26

Specifications

Material:
Insulator: Polyamide 6.6, black, rated UL 94V-0
Contact: Brass, Tin plated
Screws: Steel, nickel plated
Plating:
200μ' tin-lead over 100μ' copper underplated. or
optional gold flash over 100μ' nickel underplated

Electrical:
Operation voltage: 300V AC max
Current rating: Pitch A=10 Amps max
Pitch B=15 Amps max
Pitch C, D=20 Amps max
Pitch E=25 Amps max

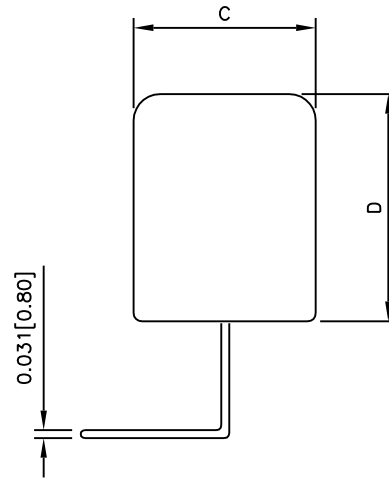
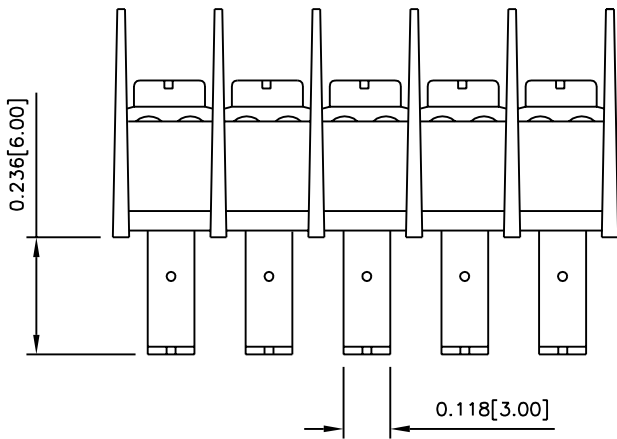
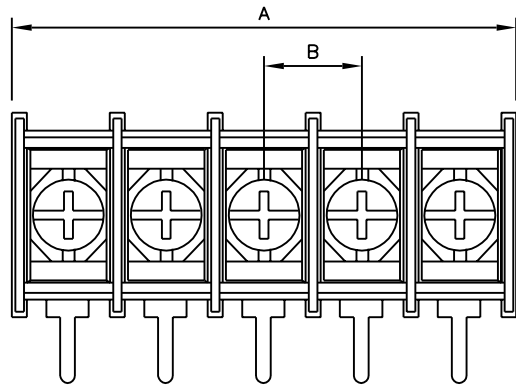
Insulation resistance: 1000 MΩmin @ 500V DC
between adjacent contacts (75°F and 50% R.H.)
Dielectric withstanding voltage: 2000V AC min rms
(sea level)

Mechanical:
Wire Range: 22-16 AWG
Operating temperature: -40°C to +105°C

Dim A	Dim B	Dim C	Dim D
0.300[7.62] x No. of Pos. + 0.079[2.00]	7.62mm	0.539[13.70]	0.598[15.20]
0.325[8.25] x No. of Pos. + 0.079[2.00]	8.25mm	0.539[13.70]	0.598[15.20]
0.374[9.50] x No. of Pos. + 0.079[2.00]	9.50mm	0.650[16.50]	0.728[18.50]
0.394[10.00] x No. of Pos. + 0.079[2.00]	10.00mm	0.610[15.50]	0.728[18.50]

UNLESS NOTED TOLERANCES ARE: .XX ± .01 .XXX ± .005 ANGLES ± 1°	THIRD ANGLE PROJECTION 	 1170 S. PATTON ST. XENIA, OHIO 45385 PH: (937) 374-2700 FX: (937) 374-4774	
UNIT : INCH[MM]	DRWN : XLZ	THESE DRAWINGS AND SPECIFICATIONS ARE THE PROPERTY OF SPI AND SHALL NOT BE COPIED, USED OR RE-PRODUCED WITHOUT PERMISSION.	
SCALE : NTS	DATE : 06/18/01		
	CHK'D : SAW		
SHEET : 1 OF 1	APV'D :		
TITLE Single Wall Barrier Terminal Block		SPI P/N : TB01-2 SERIES	REV : A
FILE NUMBER :			

REVISIONS LIST				
REV	ECO #	DESCRIPTION	DATE	APV'D



ORDERING INFORMATION

TB01-5 X X X X

Right angle PCB

Pitch:
A=7.62mm
B=8.25mm

Plating:
T = Tin*
F = Gold flash

Mounting options:
N=Without mounting ears*
H=with mounting ears

* Standard

Positions:

Pitch	W/O	With Ears
A	02-33	02-30
B	02-32	02-28

Specifications


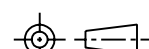
Material:
 Insulator: Polyamide 6.6, black, rated UL 94V-0
 Contact: Brass, Tin plated
 Screws: Steel, nickel plated
 Plating:
 200µ" tin-lead over 100µ" copper underplated. or
 optional gold flash over 100µ" nickel underplated

Electrical:
 Operation voltage: 300V AC max
 Current rating: Pitch A=10 Amps max
 Pitch B=15 Amps max
 Pitch C, D=20 Amps max
 Pitch E=25 Amps max

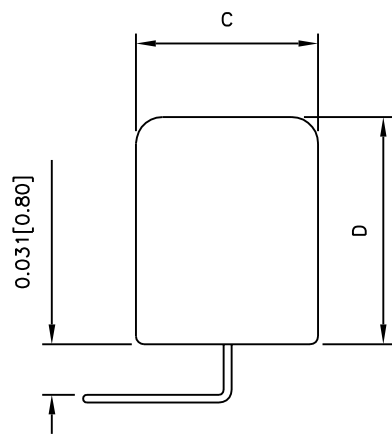
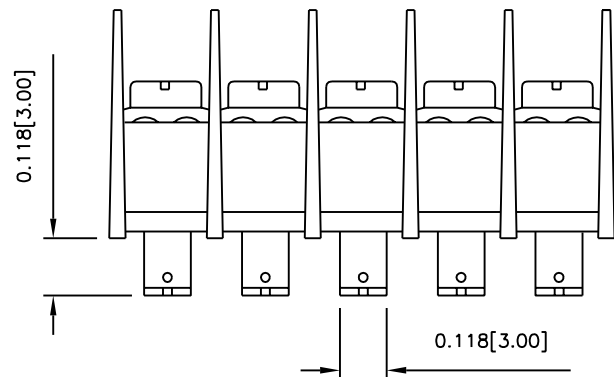
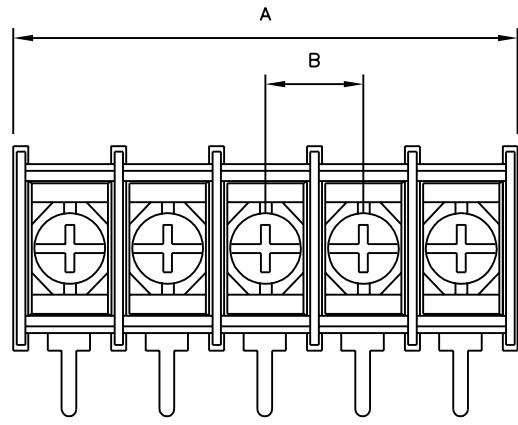
Insulation resistance: 1000 MΩmin @ 500V DC
 between adjacent contacts (75°F and 50% R.H.)
 Dielectric withstanding voltage: 2000V AC min rms
 (sea level)

Mechanical:
 Wire Range: 22-16 AWG
 Operating temperature: -40°C to +105°C

Dim A	Dim B	Dim C	Dim D
0.300[7.62] x No. of Pos. + 0.079[2.00]	7.62mm	0.539[13.70]	0.598[15.20]
0.325[8.25] x No. of Pos. + 0.079[2.00]	8.25mm	0.539[13.70]	0.598[15.20]

UNLESS NOTED TOLERANCES ARE: .XX ± .01 .XXX ± .005 ANGLES ± 1°	THIRD ANGLE PROJECTION	 1170 S. PATTON ST. XENIA, OHIO 45385 PH: (937) 374-2700 FX: (937) 374-4774		
				
UNIT : INCH[MM]	DRWN : XLZ	THESE DRAWINGS AND SPECIFICATIONS ARE THE PROPERTY OF SPI AND SHALL NOT BE COPIED, USED OR RE- PRODUCED WITHOUT PERMISSION.	TITLE	
SCALE : NTS	DATE : 06/18/01		Single Wall Barrier Terminal Block	
SHEET : 1 OF 1	CHK'D : SAW		SPI P / N : TB01-5 SERIES	REV : A
	APV'D :		FILE NUMBER :	

REVISIONS LIST				
REV	ECO #	DESCRIPTION	DATE	APV'D



ORDERING INFORMATION

Short footprint right angle PCB ———— TB01-4 X X X X

Pitch: ————

A=7.62mm
B=8.25mm
C=9.50mm
D=10.00mm
E=11.00mm

Plating:
T = Tin*
F = Gold flash

Mounting options:
N=Without mounting ears*
H=with mounting ears

Positions: ————

Pitch	W/D	With Ears
A	02-33	02-30
B	02-32	02-28
C	02-30	02-26
D	02-30	02-26
E	02-26	02-22

* Standard

Specifications

Material:
Insulator: Polyamide 6.6, black, rated UL 94V-0
Contact: Brass, Tin plated
Screws: Steel, nickel plated
Plating:
200µ' tin-lead over 100µ' copper underplated. or
optional gold flash over 100µ' nickel underplated

Electrical:
Operation voltage: 300V AC max
Current rating: Pitch A=10 Amps max
Pitch B=15 Amps max
Pitch C, D=20 Amps max
Pitch E=25 Amps max

Insulation resistance: 1000 MΩmin @ 500V DC
between adjacent contacts (75°F and 50% R.H.)
Dielectric withstanding voltage: 2000V AC min rms
(sea level)

Mechanical:
Wire Range: 22-16 AWG
Operating temperature: -40°C to +105°C

Dim A	Dim B	Dim C	Dim D	Dim E
0.300[7.62] x No. of Pos. + 0.079[2.00]	7.62mm	0.539[13.70]	0.598[15.20]	0.354[9.00]
0.325[8.25] x No. of Pos. + 0.079[2.00]	8.25mm	0.539[13.70]	0.598[15.20]	0.374[9.50]
0.374[9.50] x No. of Pos. + 0.079[2.00]	9.50mm	0.650[16.50]	0.728[18.50]	0.492[12.50]
0.394[10.00] x No. of Pos. + 0.079[2.00]	10.00mm	0.610[15.50]	0.728[18.50]	0.492[12.50]
0.433[11.00] x No. of Pos. + 0.079[2.00]	11.00mm	0.677[17.20]	0.748[19.00]	0.531[13.50]

UNLESS NOTED TOLERANCES ARE:
.XX ± .01
.XXX ± .005
ANGLES ± 1°

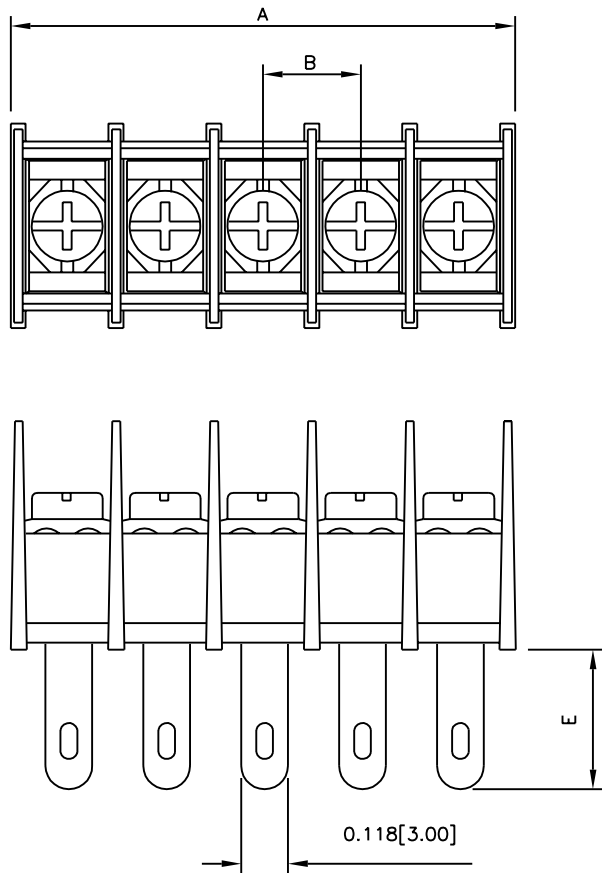
THIRD ANGLE PROJECTION



1170 S. PATTON ST.
XENIA, OHIO 45385
PH: (937) 374-2700
FX: (937) 374-4774

UNIT: INCH[MM]	DRWN: XLZ	THESE DRAWINGS AND SPECIFICATIONS ARE THE PROPERTY OF SPI AND SHALL NOT BE COPIED, USED OR RE-PRODUCED WITHOUT PERMISSION.	TITLE Single Wall Barrier Terminal Block	
SCALE: NTS	DATE: 06/18/01		S P I P / N : TB01-4 SERIES	
	CHK'D: SAW		REV: A	
SHEET: 1 OF 1	APV'D:		FILE NUMBER:	

REVISIONS LIST				
REV	ECO #	DESCRIPTION	DATE	APV 'D



ORDERING INFORMATION

TB01-3 X X X X

Solder eyelet

Pitch:
A=7.62mm
B=8.25mm
C=9.50mm
D=10.00mm
E=11.00mm

Plating:
T = Tin*
F = Gold flash

Mounting options:
N=Without mounting ears*
H=with mounting ears

Positions:

Pitch	W/D	With Ears
A	02-33	02-30
B	02-32	02-28
C	02-30	02-26
D	02-30	02-26
E	02-26	02-22

* Standard

Specifications

Material:
Insulator: Polyamide 6.6, black, rated UL 94V-0
Contact: Brass, Tin plated
Screws: Steel, nickel plated
Plating:
200µ" tin-lead over 100µ" copper underplated, or
optional gold flash over 100µ" nickel underplated

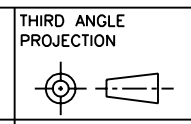
Electrical:
Operation voltage: 300V AC max
Current rating: Pitch A=10 Amps max
Pitch B=15 Amps max
Pitch C, D=20 Amps max
Pitch E=25 Amps max

Insulation resistance: 1000 MΩmin @ 500V DC
between adjacent contacts (75°F and 50% R.H.)
Dielectric withstanding voltage: 2000V AC min rms
(Sea level)

Mechanical:
Wire Range: 22-16 AWG
Operating temperature: -40°C to +105°C

Dim A	Dim B	Dim C	Dim D	Dim E
0.300[7.62] x No. of Pos. + 0.079[2.00]	7.62mm	0.539[13.70]	0.598[15.20]	0.354[9.00]
0.325[8.25] x No. of Pos. + 0.079[2.00]	8.25mm	0.539[13.70]	0.598[15.20]	0.374[9.50]
0.374[9.50] x No. of Pos. + 0.079[2.00]	9.50mm	0.650[16.50]	0.728[18.50]	0.492[12.50]
0.394[10.00] x No. of Pos. + 0.079[2.00]	10.00mm	0.610[15.50]	0.728[18.50]	0.492[12.50]
0.433[11.00] x No. of Pos. + 0.079[2.00]	11.00mm	0.677[17.20]	0.748[19.00]	0.531[13.50]

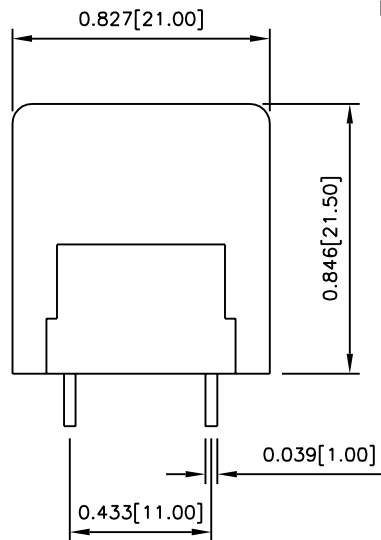
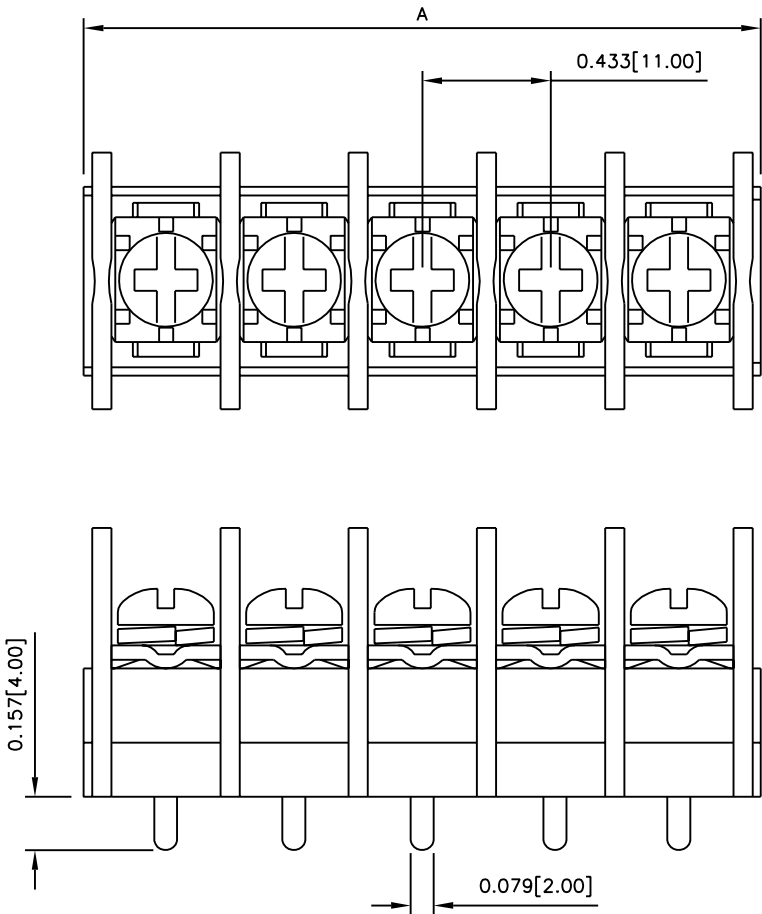
UNLESS NOTED
TOLERANCES ARE:
.XX ± .01
.XXX ± .005
ANGLES ± 1°



1170 S. PATTON ST.
XENIA, OHIO 45385
PH: (937) 374-2700
FX: (937) 374-4774

UNIT: INCH[MM]	DRWN: XLZ	THESE DRAWINGS AND SPECIFICATIONS ARE THE PROPERTY OF SPI AND SHALL NOT BE COPIED, USED OR RE-PRODUCED WITHOUT PERMISSION.	TITLE Single Wall Barrier Terminal Block	
SCALE: NTS	DATE: 06/18/01		S P I P / N : TB01-3 SERIES	
	CHK'D: SAW		REV: A	
SHEET: 1 OF 1	APV'D:		FILE NUMBER:	

REVISIONS LIST				
REV	ECO #	DESCRIPTION	DATE	APV'D



ORDERING INFORMATION

TB01-6 E X X X
 Dual PCB ———
 Pitch: ———
 E=11.00mm

Positions: ———

W/O	With Ears
02-26	02-22

Plating:
 T = Tin*
 F = Gold flash

Mounting options:
 N=Without mounting ears*
 H=with mounting ears

* Standard

Specifications

Material:
 Insulator: Polyamide 6.6, black, rated UL 94V-0
 Contact: Brass, Tin plated
 Screws: Steel, nickel plated
 Plating:
 200µ" tin-lead over 100µ" copper underplated. or
 optional gold flash over 100µ" nickel underplated

Electrical:
 Operation voltage: 300V AC max
 Current rating: Pitch A=10 Amps max
 Pitch B=15 Amps max
 Pitch C, D=20 Amps max
 Pitch E=25 Amps max

Insulation resistance: 1000 MΩmin @ 500V DC
 between adjacent contacts (75°F and 50% R.H.)
 Dielectric withstanding voltage: 2000V AC min rms
 (sea level)

Mechanical:
 Wire Range: 22-16 AWG
 Operating temperature: -40°C to +105°C

Dim A=0.433[11.00] x No. of Pos. + 0.079[2.00]

UNLESS NOTED TOLERANCES ARE: .XX ± .01 .XXX ± .005 ANGLES ± 1°	THIRD ANGLE PROJECTION
--	-------------------------------



1170 S. PATTON ST.
 XENIA, OHIO 45385
 PH: (937) 374-2700
 FX: (937) 374-4774

UNIT : INCH[MM]	DRWN : XLZ	THESE DRAWINGS AND SPECIFICATIONS ARE THE PROPERTY OF SPI AND SHALL NOT BE COPIED, USED OR RE-PRODUCED WITHOUT PERMISSION.	TITLE Single Wall Barrier Terminal Block	
SCALE : NTS	DATE : 06/18/01		SPI P / N : TB01-6 SERIES	REV : A
SHEET : 1 OF 1	APV'D :	FILE NUMBER :		